



WIDEWALLS

Woodward Gallery Celebrates Seasonal Transition from Fall to Winter with a Group Show

Exhibition Announcements



November 19, 2022

[Kame Hame](#)

What a wonderful time to be in New York City. As the leaves fall, carpeting the pavements with beautiful colors, longer nights are coming, and with them, the holidays. The city is once again making a transition from Autumn to Winter.

It is a perfect time to honor this magical season with a celebration in the form of artistic expression. Group exhibition entitled *Winter Mix* at Woodward Gallery tells the everlasting tale of Fall giving way to Winter with selected artworks by artists Robert Indiana, Susan Breen, Knox Martin, Terence Netter, Keith Haring, LA2, Rupert Jasen Smith, and Kenji Nakayama.



[Privacy](#)

WIDEWALLS



Robert Indiana - RI67, LOVE, 1967. Screenprint on paper 29 x 30.25 inches; 73.7 x 76.8 cm paper size 36.5 x 38 inches; 92.71 x 96.52 cm framed Edition: PP Unsigned

Message of LOVE

From Pop artist [Robert Indiana](#) comes the widely celebrated piece [LOVE](#). The image, which is a combination of aesthetics of advertisements and logos, was first created in 1966 in the form of a painting. Since then, it has won the world in many other media forms, including sculptures, stamps and postcards, and was translated into numerous languages.

The artwork entitled *Unique Winter Square* was created by [Susan Breen](#), who has shown her [contemporary abstractions](#) in numerous solo and group exhibitions over the last two decades. What makes the artist's harmonious compositions, full of abstractions, unique is their various states of flux.

[Knox Martin's](#) signature gestural brushstrokes are instantly recognizable in his painting *Crucifixion*. The artist's hard-to-categorize work is world-renowned for its organic shapes and firm-edged lines.

Former Jesuit priest [Terence Netter](#), best known for his Action and Abstract paintings, created *Winter Sunset* in 1996. Famous for choosing love instead of the priesthood, his goal has always been for his work to transport the viewers' mind and eye "beyond the here



Privacy



WIDEWALLS



Left: Keith Haring - Galerie Hete A M Hunermann Dusseldorf, 1989. Lithograph in black, red, and yellow on heavy paper; 33 x 23.5 inches; 83.8 x 59.7 cm paper size 34 x 25 inches; 86.4 x 63.5 cm. Custom framed with Museum Tru Vue Invisible Acrylic Signed and dated vertical right in plate; Signed and dated lower margin in black marker / **Right:** Rupert Jasen Smith - The Kiss, from the Greta Garbo Suite, 1988. Silkscreen in colors on paper 42.9 x 34.1 inches; 109 x 86.6 cm paper size 43.5 x 34.5 inches; 110.5 x 87.6 cm framed. Signed and numbered in pencil LL

The Colors of Autumn

Red and yellow hues, the colors of Fall, dominate [Keith Haring's](#) *Galerie Hete A M Hunermann Dusseldorf* (1989). The legendary [Pop artist](#) ruled the New York art scene during the 1980s, creating works that were his commentary on contemporary social and political events.

[Angel Ortiz](#), aka [LA2](#), which stands for "Little Angel," is one of the most renowned graffiti artists from the Lower East Side and is best known for his long and successful collaboration with Keith Haring. *Winter Mix* exhibition brings the artist's piece entitled *Pyramids* (2010)

Many art historians have claimed that [Andy Warhol's](#) Factory was only so productive and successful with the assistance of [Rupert Jasen Smith](#). After years of working as an assistant to the famous Pop artist, Smith rose to fame with the production of a series of **Greta Garbo portraits** which made him an artist in his own right.

Japanese-born artist [Kenji Nakayama](#) creates mixed media, hand-cut stencil, acryl, and [photorealistic](#) paintings that perfectly incorporate both Japanese and American influences, such as his work *Concrete Jungle 2 (Gray)*.

WIDEWALLS



Left: Terence Netter - Winter Sunset, 1996. Mixed media on canvas; 16 x 12 inches; 40.6 x 30.5 cm canvas size 18 x 14 inches; 45.7 x 35.6 cm framed size Signed with initials LR / **Right:** Kenji Nakayama - Concrete Jungle 2 (Gray), 2012. Spray paint with multi layer stencils on hard board; 36 x 34 inches; 91.4 x 61 cm Edition 2/10; Each is considered unique Signed, dated, titled and numbered on verso

Winter Mix at Woodward Gallery

The exhibition, which is on permanent view in the gallery's street-level windows, offers passers-by a **spark of light** that conveys themes of passion, love, and celebration in the days of Winter darkness.

Exhibition *Winter Mix* is on view at [Woodward Gallery](#) in New York City from **November until December, 2022**.

Featured image: Terence Netter - Winter Sunset (detail), 1996 / LA 2/ LAII/ Angel Ortiz - Pyramids, 2010. Unique oil marker on vintage Alexander Calder 1970 color lithograph; 29 x 42.5 inches; 73.7 x 108 cm paper size; 32.5 x 45.75 inches; 82.6 x 116.2 cm framed. Signed in pencil lower right: "Calder" and "LA II" / Knox Martin - Crucifixion, 2013. Acrylic on canvas 24 x 31 inches; 61 x 78.7 cm canvas size 25.5 x 32.75 inches; 64.8 x 83.2 cm framed. Signed LR

Follow These Artists

Robert Indiana

[FOLLOW](#)

Susan Breen

[FOLLOW](#)

Keith Haring

[FOLLOW](#)



Privacy

WIDEWALLS

New York City, United States of America

FOLLOW

Read Other Interesting Stories



Gagosian Celebrates Freud's Centenary by Showcasing His Key Works Alongside Those by His Closest Peers

Exhibition Announcements | Eli Anapur

The exhibition Friends and Relations: Lucian Freud, Francis Bacon, Frank Auerbach, Michael Andrews arrives at Gagosian in London.

CONTINUE READING →

WIDEWALLS



Laura Rathe Fine Art to Present a Group Show Exploring the Power of Color

Exhibition Announcements | Kame Hame

The upcoming group exhibition at Laura Rathe Fine Art explores the power of color in works by artists Matt Devine, Gian Garofalo, and Katherine Houston.

[CONTINUE READING](#) →

WIDEWALLS



The New Edition of Vienna Art Week Aims to Challenge Orders

Exhibition Announcements | Eli Anapur

Vienna Art Week will bring a rich program of art events to the Austrian capital, highlighting its position as one of the leading art centers in the world.

CONTINUE READING →

Gagosian Celebrates Freud's Centenary by Showcasing His Key Works Alongside Those by His Closest Peers

Exhibition Announcements



WIDEWALLS

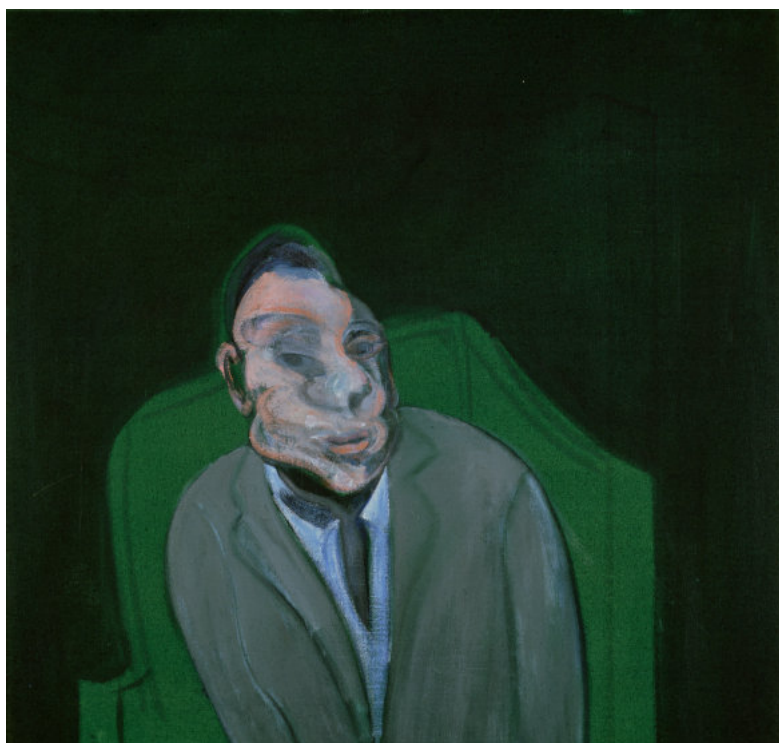


November 17, 2022

[Eli Anapur](#)

In 1963, **John Deakin** took a photo of five painters in Soho, Lucian Freud, Francis Bacon, Frank Auerbach, Michael Andrews, and much younger Timothy Behrens. The artists were friends and were aware of each others' practices. Freud also collected his friends' work and owned fifteen paintings and a large number of works on paper by Auerbach.

Starting from the photograph, the upcoming exhibition at Gagosian in London, *Friends and Relations: Lucian Freud, Francis Bacon, Frank Auerbach, Michael Andrews*, curated by **Richard Calvocoressi**, will contextualize key works by four artists and elucidate the connections between their respective practices.



WIDEWALLS

The Four Artists' Camaraderie

The exhibition features around **forty paintings**, including some of the artists' portraits of each other from private and public collections, and positions Freud as the group's central figure.

Portraiture was at the heart of the artists' practices, although slightly less in Andrew's than in others. The exhibition title also echoes the artists' camaraderie and the intimate relationships between artists and sitters. [Lucian Freud's](#) *Girl in a Dark Jacket* (1947) is an example of his early style showing [Kitty Garman](#), the artist's first wife and daughter of sculptor Jacob Epstein and Kathleen Garman.

Three Studies for Portraits: Isabel Rawsthorne, Lucian Freud and J.H. (1966) by [Francis Bacon](#) commemorated the intense relationship between him and Freud, with Freud's head paired with John Hewitt, an antiques dealer, and Rawsthorne, a close friend, and fellow artist whom Bacon painted many times.

Another highlight of the show is *Portrait of a Man Walking Down Steps* (1972), Bacon's tribute to his lover [George Dyer](#), who committed suicide in 1971, just a day before the opening of the artist's exhibition at the Grand Palais.



Left: Lucian Freud - *Reflection* (self-portrait), 1981 - 1982. Oil on canvas 12 x 10 in 30.5 x 25.4 cm © The Lucian Freud Archive / **Right:** Bridgeman Images. Photo: Antonia Reeve / National Galleries of Scotland / Frank Auerbach - *Self Portrait III*, 2021. Acrylic on board 23 3/4 x 21 in 60.3 x 53.3 cm © Frank Auerbach, Courtesy Geoffrey Parton. Photo: Prudence Cuming Associates Ltd. Courtesy Gagosian

WIDEWALLS

Boehm (1964), which depicts Auerbach's cousin, a refugee from Nazi Germany. The painting's dense accretion of paint epitomizes Auerbach's approach during this era.

The Colony Room I (1962), [Michael Andrews's](#) ambitious group portrait on loan from Pallant House Gallery, is set in Soho's storied drinking club. It pictures Andrews's own mural in the background, with figures of Freud, Bacon, Bruce Bernard, artist's model Henrietta Moraes, and the club's proprietor, Muriel Belcher.

A selection of photographs of the four artists by their friend [Bruce Bernard](#) (1928–2000) will complement the paintings at the exhibition. Some photos showing artists in their studios will be exhibited publicly for the first time.



Group portrait of painters (left to right) Timothy Behrens, Lucian Freud, Francis Bacon, Frank Auerbach and Michael Andrews at Wheelers Restaurant in Soho, London, 1963 © John Deakin / John Deakin Archive / Bridgeman Images

Friends and Relations at Gagosian

The exhibition *Friends and Relations: Lucian Freud, Francis Bacon, Frank Auerbach, Michael Andrews* will be on view at [Gagosian](#) in London from November 17th until January 28th, 2023.

WIDEWALLS

Featured image: Michael Andrews - The Colony Room I, 1962. Oil on board 48 x 71
15/16 in 121.9 x 182.8 cm Pallant House Gallery, Chichester, Wilson Gift through Art
Fund (2006) © The estate of Michael Andrews / Tate Photo: Mike Bruce. Courtesy
Gagosian

Follow These Artists

Francis Bacon

[FOLLOW](#)

Frank Auerbach

[FOLLOW](#)

Lucian Freud

[FOLLOW](#)

Show More ▼

Follow These Galleries

Gagosian Gallery | London | Grosvenor Hill

London, United Kingdom

[FOLLOW](#)

Read Other Interesting Stories



WIDEWALLS



Woodward Gallery Celebrates Seasonal Transition from Fall to Winter with a Group Show

Exhibition Announcements | Kame Hame

Group exhibition at Woodward Gallery in New York celebrates changing seasons with works by some of the most renowned contemporary artists.

[CONTINUE READING](#) →